



BOOK AN APPOINTMENT TO VIEW TODAY!

This charming 2 bedroom semi-detached property is thoughtfully designed with the interiors enjoying well designed spaces that seamlessly blend functionality with style. The high-quality fitted kitchen is a culinary enthusiast's dream, while the full-width sitting/dining room is a perfect space for relaxation, with French doors that open to reveal a garden, providing an ideal setting for outdoor entertainment and tranquillity. The first bedroom features fitted wardrobes and a convenient en-suite, ensuring a private retreat. Storage is also cleverly integrated throughout the property, catering to practical needs. Located on the doorstep of 140 acres of picturesque Berkshire countryside, the residence offers a peaceful escape, yet maintains easy accessibility to a local supermarket, pharmacy, and good-rated schools. With only a short drive to Wokingham town centre and just over 20 minutes to Reading town centre, this property harmoniously combines rural serenity with urban convenience, making it an ideal home for those seeking a balanced lifestyle.

Interested? Please contact our New Homes team to find out more, or to book a viewing.

newhomes@haslams.net
0118 960 1010



- 797 sq ft 2 bedroom semi-detached home
- Light filled kitchen with integrated appliances
- Sitting/Dining room with patio doors to garden
- Great Cala build and specification
- Two parking spaces
- Set near to 140 acres green open space





Further details

Parking

The property has driveway parking. Parking of commercial vehicles or caravans is not permitted.

Local Authority: Wokingham Borough Council

Council Tax Band: New Build - To be confirmed

Estate charge: £122.47 per annum

Predictive EPC Rating: B

The property is within a development of 157 homes of which 72 have been built and 85 are to be built and which has future phases to be built.

Reservation Fee: Please note that to secure an offer on this property, the developer will expect a reservation fee to be paid. For specific terms, please contact our office.

Services:

Water: Mains supply

Drainage: Mains supply

Electricity: Mains supply

Heating: Gas Fired boiler

Broadband Connection: We are informed by the developer that a superfast broadband connection (Fibre To The Premises) is to be installed. For an indication of specific speeds and supply of broadband, we recommend potential buyers go to the Ofcom website "Broadband and mobile coverage checker", www.ofcom.org.uk

Mobile phone coverage: The developer is unaware of any signal coverage issues, however we recommend potential buyers check via Ofcom website www.ofcom.org.uk

The property is currently awaiting building control sign off, this will follow completion of the property.

Agents Note:

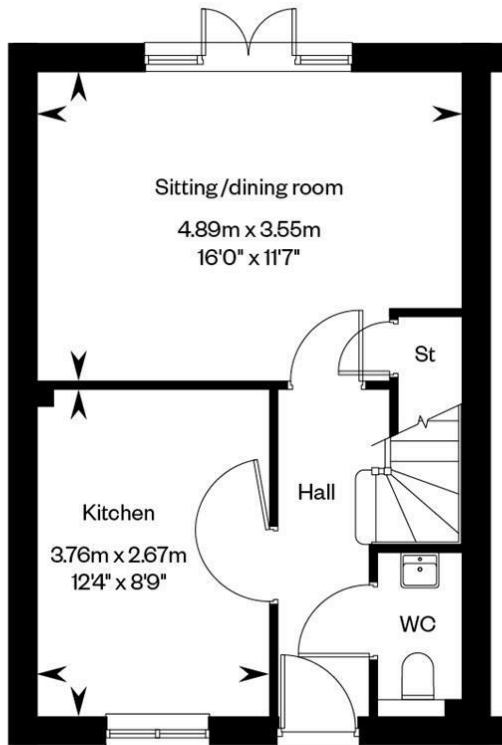
The photographs and CGIs are used for illustrative purposes only and depict typical interiors from Cala Homes. They do not reflect the layout and finishes of this home.

Floorplan

The Aspen

Plots 417, 428, 490, 523, 525, 527, 537, 567 & 570 – as shown

Plots 416, 427, 437, 452, 489, 526, 528, 529, 538, 542 & 565 – handed

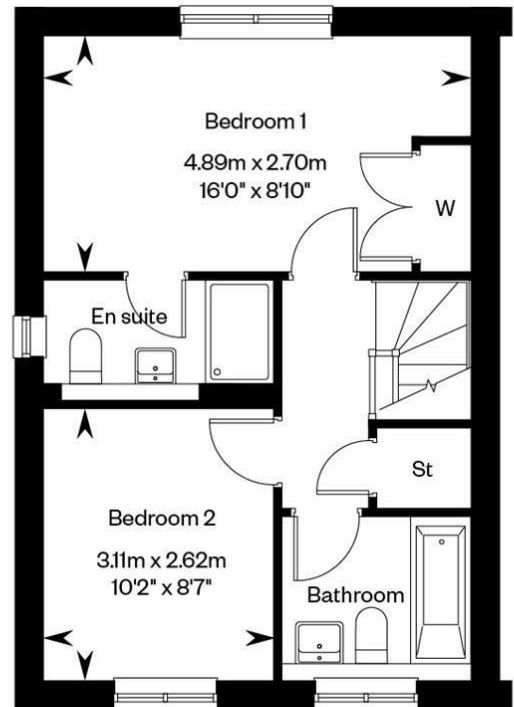


Ground floor

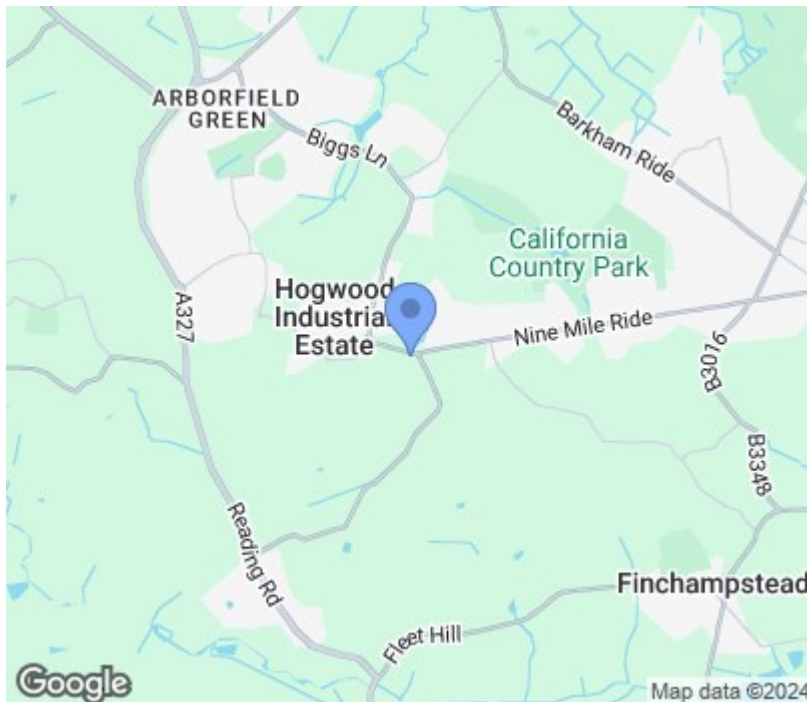
The Aspen

Plots 417, 428, 490, 523, 525, 527, 537, 567 & 570 – as shown

Plots 416, 427, 437, 452, 489, 526, 528, 529, 538, 542 & 565 – handed



First floor



Please contact our New Homes team to find out more, or to book a viewing.

newhomes@haslams.net
0118 960 1010

The specifications outlined in this brochure are indicative only. Developers reserve the right to make any alterations to the specifications without warning. Whilst these particulars are prepared with all due care, the information is intended as a preliminary guide only. The computer generated images and photographs do not necessarily represent the actual finishings/elevation or treatments, furnishings and fittings at this development. Room measurements are approximate only. Floor plans, dimensions and specifications are correct at the time of print. Nothing contained in this brochure shall constitute or form part of any contract. Information contained in this brochure is accurate at the time of going to print.